

DESCRIPTION

Radiant Communications Corp **AN4X** Weatherproof Outdoor Fiber Optic Patch and Splice Box provides all the capability of patching and splicing within one box. The unit offers a unique area for patching and splicing fiber optic cables. Constructed of .80 gauge Aluminum, it provides exceptional long term durability.

The **AN4X** Weatherproof Outdoor Fiber Optic Patch and Splice Box is ideal for mounting at cell sites for wireless back haul and is capable of holding eight optional splice trays on each side.

AN4X
Weatherproof Outdoor Fiber Optic Patch and Splice Box

BENEFITS

- Center Panel for Patch and Splice Applications
- Constructed of .80 gauge Aluminum.
- Mounting Holes positioned 16" on center

FEATURES

- Strain relief brackets at each entry port
- Two 2" entry holes at bottom accommodates 2" conduit sleeves with weather proof Grommets
- Ground Lug provided



**Radiant
Communications
Corporation**

Phone: (908) 757-7444
(800) 969-3427
Fax: (908) 757-8666
E-mail: sales@rccfiber.com
www.rccfiber.com

5001 Hadley Rd
PO BOX 867
South Plainfield, NJ 07080
USA 7/2009

SPECIFICATIONS

General Characteristics

Dimensions:
16W / 14H / 7D

Weight:
5 Lbs

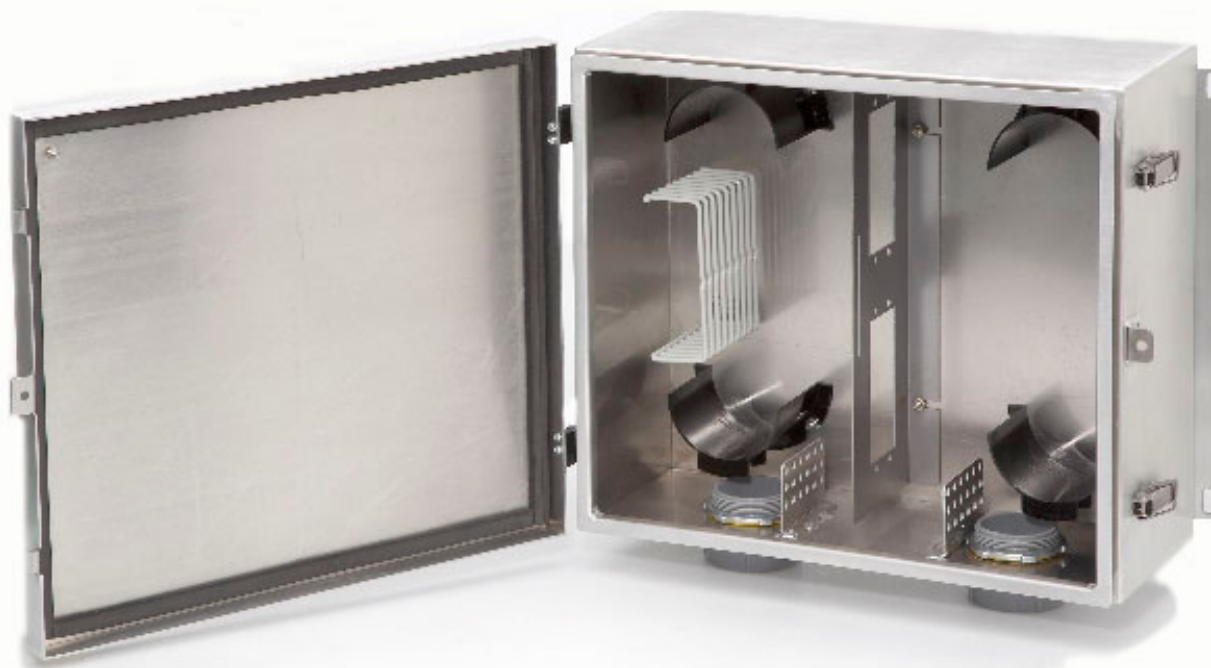
Mounting Holes:
16" on center

Optional:

Center Panel with optional fiber optic adapter Strips available in ST, SC, SC/APC or FC configurations

Splice Tray Holders

Half moons for Cable Routing



ORDERING INFORMATION

PART NUMBER	DESCRIPTION
AN4X-*	Weatherproof Outdoor Fiber Optic Patch and Splice Box.

Note:

* When ordering Center Panel, Available Adaptor Types are as follows:

A = SC/APC, B = FC, D = ST, E = SC

- Due to product enhancements, specifications are subject to change without notice



**Radiant
Communications
Corporation**

Phone: (908) 757-7444
(800) 969-3427
Fax: (908) 757-8666
E-mail: sales@rccfiber.com

5001 Hadley Rd
PO BOX 867
South Plainfield, NJ 07080
USA 7/2009